

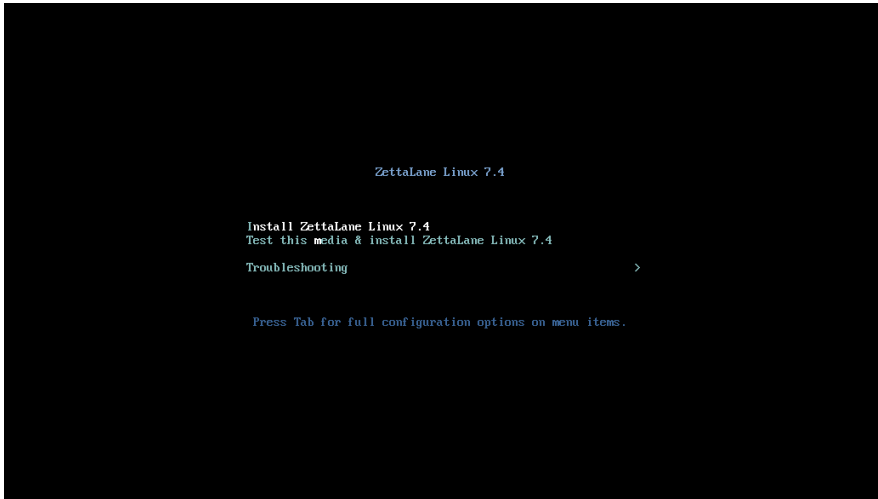
Installation

Bare-metal ISO Installation

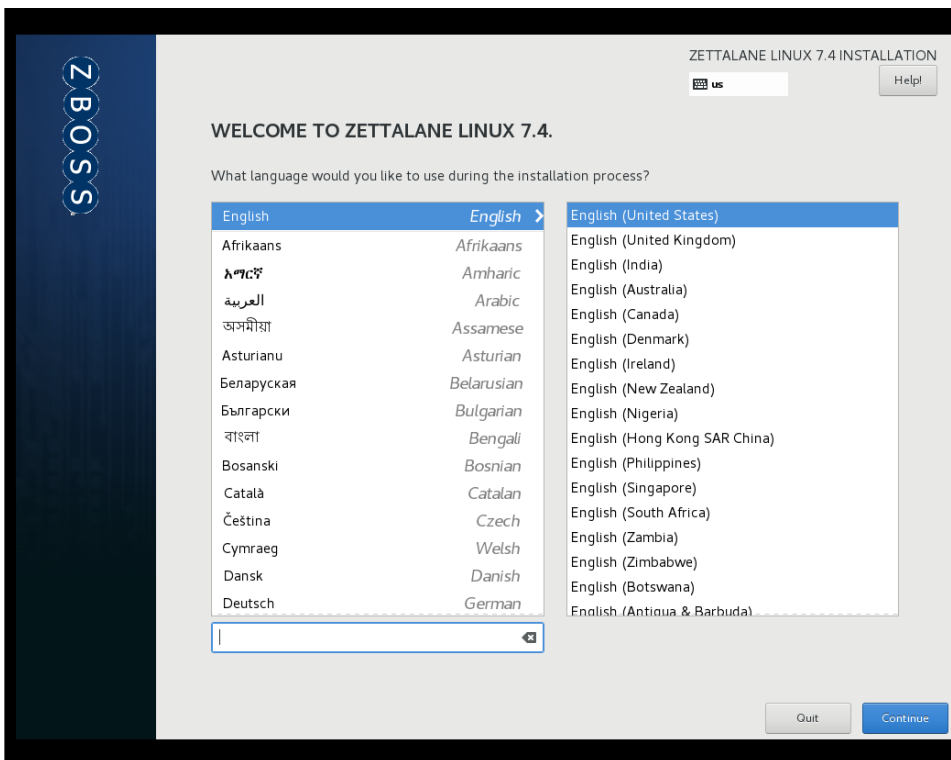
The downloaded ZettaLane image is a standard bootable ISO image. After optionally verifying the integrity of m5sum checksum you may proceed with the installation simply by booting as CDROM/DVD from the server boot menu. The GUI based installation is the standard Anaconda Installer found in CentOS/RedHat distributions.

Brief walk-thru of ZettaLane Linux installation process after booting from the dowloaded ISO image.

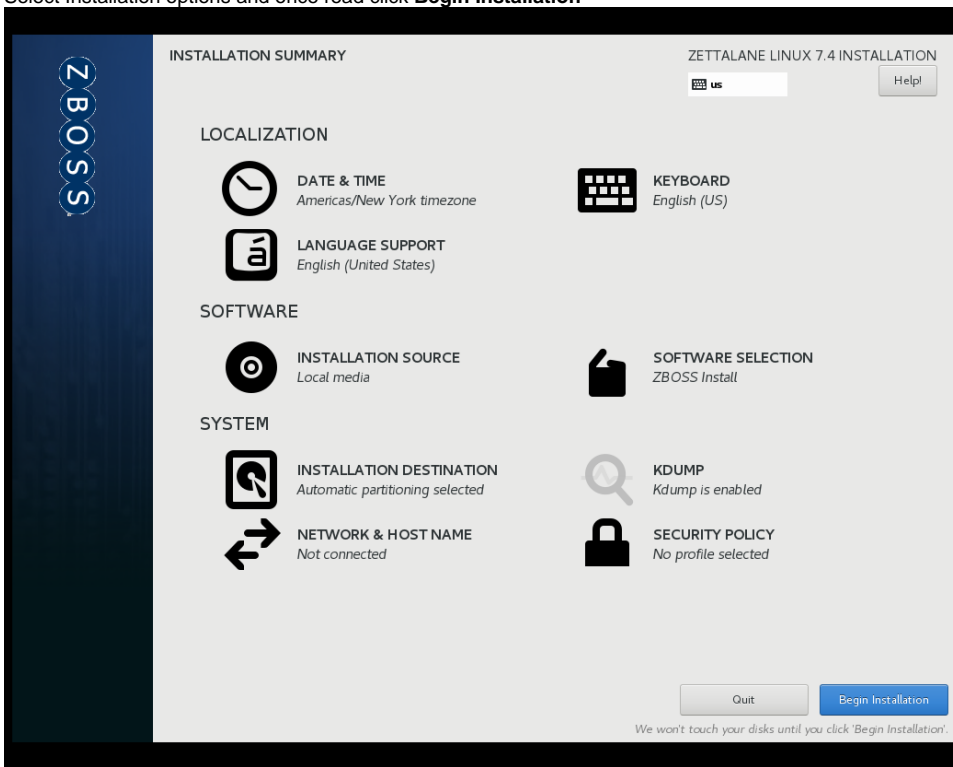
1. Select the **Install ZettaLane Linux 7.4** and hit <Enter> key.



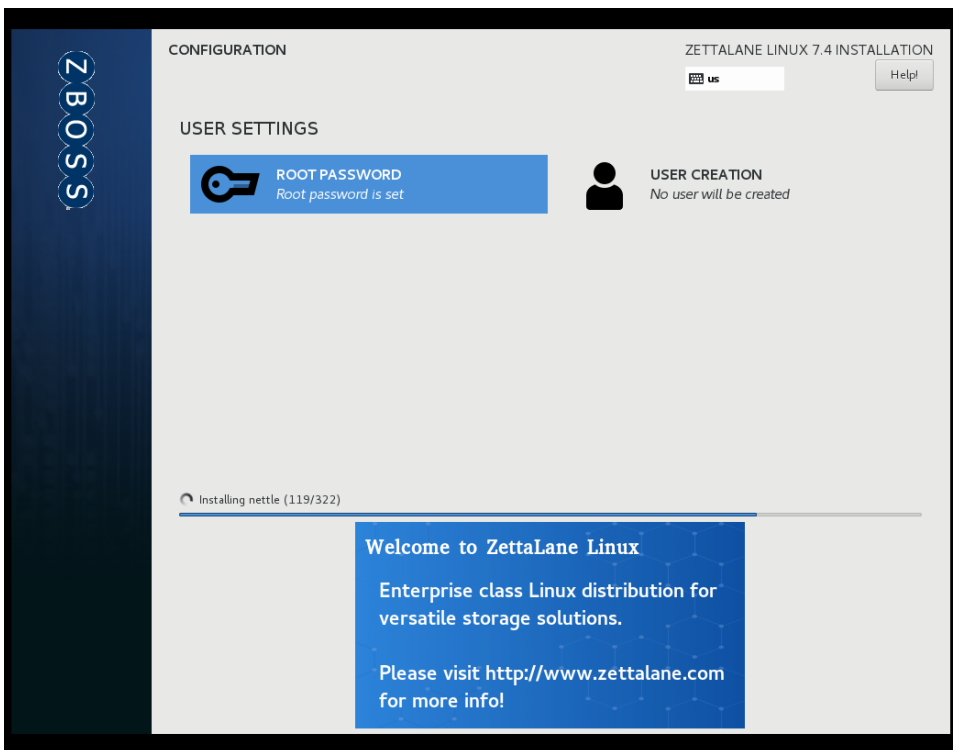
2. After installer is able to the GUI installation process you will see the following welcome screen. Select your language for installation and click **Continue**



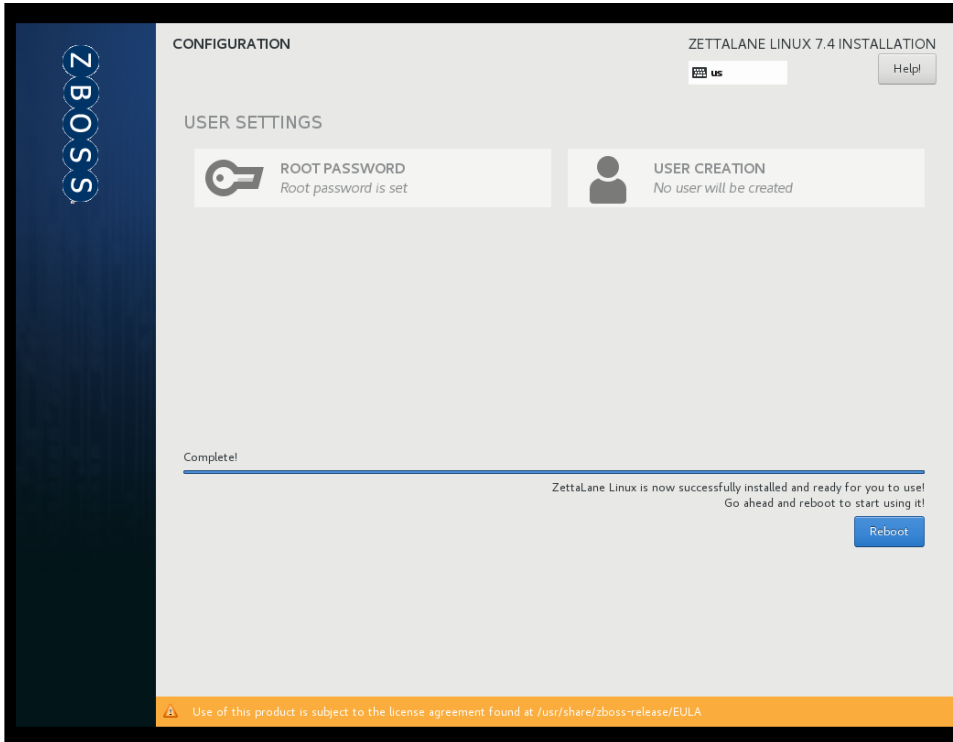
3. Select Installation options and once read click **Begin Installation**




4. While the installation process is installing and configuring selected packages, you need to set the **root password** and create additional users if needed.



5. After installation is completed you will be prompted to reboot the system.



 For more information on this installation you may find this [Sample Installation Guide](#) useful.

6. Finally activate product license to begin provisioning storage.

```
# service activate mayastor  
  
Mayastor Professional version 1.6 license activation  
  
Enter License Key:
```

On Cloud Compute Instance

On cloud MayaNAS installation is performed by running the downloaded self-extracting installer bundle image after login to your newly created compute instances using ssh. The installation is a two step process:

1. Start running installer bundle from sudo or from root shell.

```
sudo ./mayanas-installer.run  
Verifying archive integrity... 100% All good.  
Uncompressing MayaNAS 1.6 Installer 100%
```

```
  _ _ _ _ _  
 | \ | _ _ _ _ _ | \ | / \ / _ | | | | |
 | \| | / _ _ _ _ | / _ _ _ _ \ |  
 | | | ( | | | ( | | \ / _ _ _ |  
 | | | \ _ _ _ _ | \ _ _ _ _ \ |
```

|__/_

Welcome to MayaNAS Installation on Google Compute Engine

This script will install the required software packages for MayaNAS 1.6
and switch kernel to 3.10.0-693.zl7.x86_64.

Do you wish to proceed with installation? y

Installing kernel rpm kernel-3.10.0-693.zl7.x86_64.rpm ...

Preparing... ##### [100%]

Updating / installing...

1:kernel-3.10.0-693.zl7 ##### [100%]

Please reboot for new kernel to take into effect and run this installer again.

Exiting!

[user@localhost ~]\$ sudo reboot

The default Centos-7 kernel image is switched to ZettaLane Linux kernel 3.10.0-693.zl7.x86_64. This is required for our special port of Open-ZFS that is tightly integrated with Linux kernel. The compute instance will be rebooted to activate the new kernel after successful completion of step-1.

2. Running the installer again will proceed with installation of relevant packages for MayaNAS operation this time. At the end it will prepare the Web based management console and provide you with a randomly generated password for the default *admin* login account. Please make a note that information.

sudo ./mayanas-installer.run

Verifying archive integrity... 100% All good.

Uncompressing MayaNAS 1.6 Installer 100%

— — — — —
| \ | _ _ _ _ _ | \ | | / \ / _ |
| | \ | / _ ' | | | / _ ' | \ | | / _ \ \ _ \
| | | | (| | | | (| | \ | / _ _ \ _) |
| _ | | _ \ _ , | \ _ , | \ _ , | _ | \ _ / / \ _ \ _ /
|__/_

Welcome to MayaNAS Installation on Google Compute Engine

This script will install the required software packages for MayaNAS 1.6

Do you wish to proceed with installation? y

Installing packages

Loaded plugins: fastestmirror

Determining fastest mirrors

Complete!

```
Mayastor Professional version 1.6 license activation
Enter License Key:  VBZEBR05XPIIEPSZ
Evaluation version of Mayastor expires Mon Sep 17 20:46:16 2018

MAYA_USER:      Evaluation User
MAYA_LICENSE:    VBZEBR05XPIIEPSZ
License accepted.                                [ OK ]
MAYA_LICENSE:    VBZEBR05XPIIEPSZ
Stopping Mayastor server in /opt/mayastor/web

Your system generated login information for web console.
=====
Login    : admin
password: BAT360Lw
=====

Adding firewall rule to allow tcp traffic to webconsole

Starting mayastor (via systemctl):                [ OK ]

[user@localhost ~]$
```



By default the login credential for web management console is admin/Password. But for cloud installation please make a note of the random password that was auto generated. If you wish you can change the password anytime by running `/opt/mayastor/web/changepass.sh`.

Next proceed to configuration.